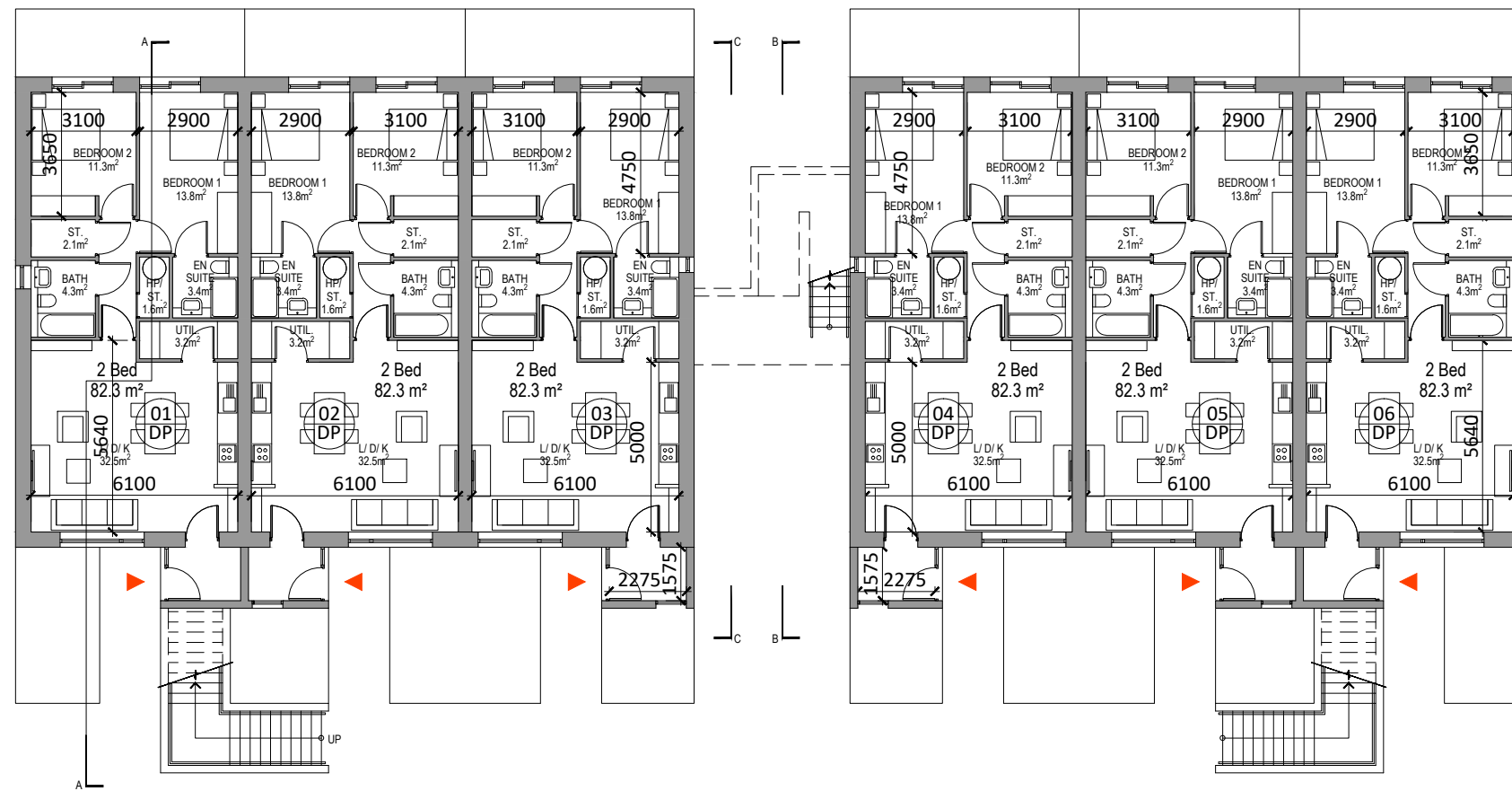


3 Bed Duplexes  
First Floor Plan  
scale 1:200



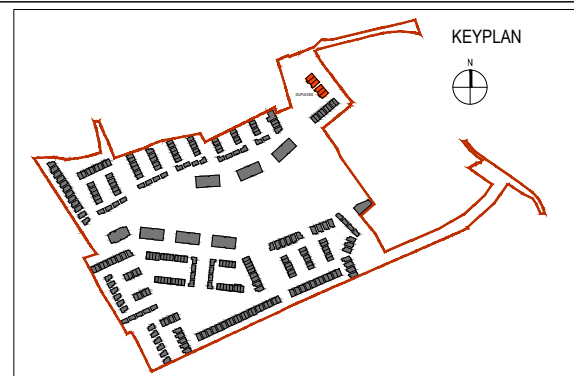
2 Bed Apartments  
Ground Floor Plan  
scale 1:200

DUPLEXES - GROUND & FIRST FLOOR PLANS

2 BED GROUND FLOOR APARTMENT: 82.3m<sup>2</sup>  
3 BED UPPER LEVEL DUPLEX: 117.3m<sup>2</sup> / 118.3m<sup>2</sup>

115  
T1 Houses are tagged to show number & type;  
the house number is in the top section of the tag, e.g. 115  
and the house type is in the lower section of the tag, e.g. T1

ALL DIMENSIONS IN MILLIMETERS  
ALL LEVELS (IN METERS) ARE RELATED TO MALIN HEAD DATUM



Revision Description	Date	Rev. No.	Issued by
Planning	15/05/2019	01	RD



architecture | urban design  
email: info@mahonypike.com  
tel: +353 1 202 7400  
fax: +353 1 283 0822  
www.mahonypike.com

Project: Residential Development  
Location: Blackrock, Dundalk, Co. Louth  
Client: Kingsbridge Consultancy Ltd.

Project No.: 1806  
Project Lead: RN  
Drawn By: BK  
Model No.: 1806-OMP-DPX-ZZ-DR-A-XX-10000  
Purpose: Planning

Drawing Title: DUPLEXES - Ground & First Floor Plans  
Drawing No.: 1806-OMP-DPX-00-DR-A-XX-10000

Suitability - Checked By - Date



Figured dimensions only to be used. This drawing is copyright of O'Mahony Pike Architects Ltd. All information is shared as per approved use in accordance with BS1192(2007) + A2(2016), Table 5; Standard Codes for Suitability of Models and Documents. If 'Information Approval Check' is empty, this information has been shared at S0 - WIP.